

MONTHLY MEMBERSHIP PROGRESS REPORT

District 119

Results as of: 5/31/2020

GMT:

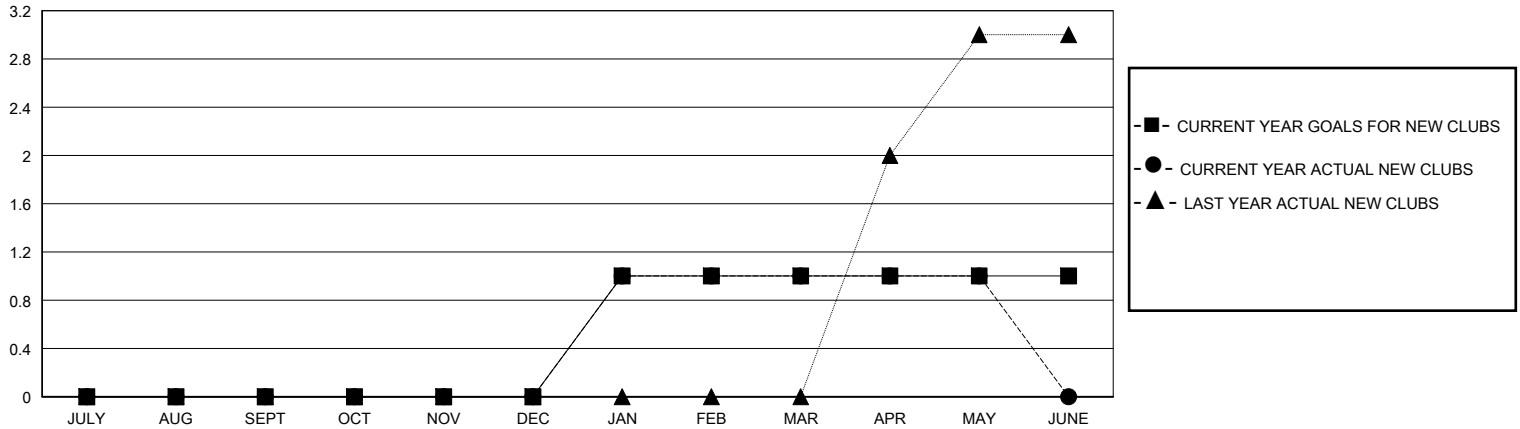
LOCATION HUNGARY

GMT CA

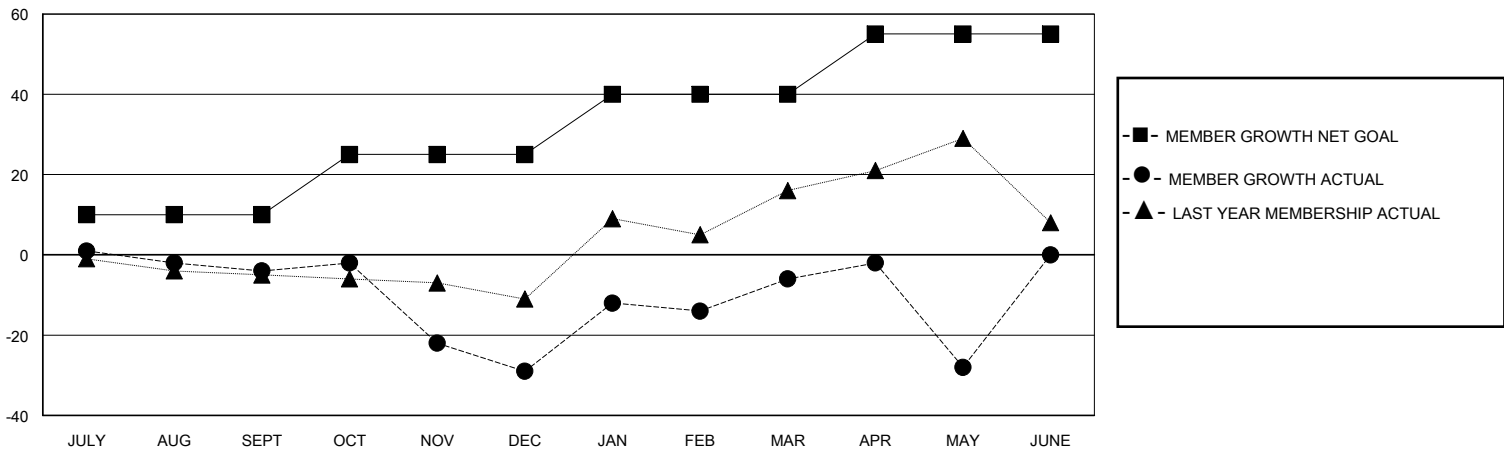
Clubs			
RESULTS FOR 2019-2020			
QUARTER	NEW CLUB GOAL	NEW CLUBS	DROPPED CLUBS
JULY/AUG/SEPT	0	0	0
OCT/NOV/DEC	0	0	0
JAN/FEB/MAR	1	1	0
APR/MAY/JUNE	0	0	0

Members			
RESULTS FOR 2019-2020			
QUARTER	MEMBER GROWTH NET GOAL	MEMBER GROWTH ACTUAL	DROPPED MEMBERS ACTUAL (including transfers)
JULY/AUG/SEPT	10	8	11
OCT/NOV/DEC	15	22	44
JAN/FEB/MAR	15	41	18
APR/MAY/JUNE	15	12	32

GOALS AND ACTUAL NEW CLUBS CUMULATIVE



GOALS AND ACTUAL MEMBERS CUMULATIVE



DROPPED CLUBS: 0	21 CLUBS OF 43 ADDED 1 OR MORE NEW MEMBERS	<u>GENDER DISTRIBUTION</u>	
		MALE	521 (60.58%)
		FEMALE	339 (39.42%)
<u>DROPPED MEMBERS</u>		TOTAL FAMILY UNIT MEMBERS 177	
DECEASED	0	FAMILY MEMBERS PAYING HALF DUES 90	
CLUB CANCELLED	0		
OTHER	105		
TOTAL	105		

[CLICK HERE FOR CUMULATIVE MEMBERSHIP DATA](#)